



D N

3

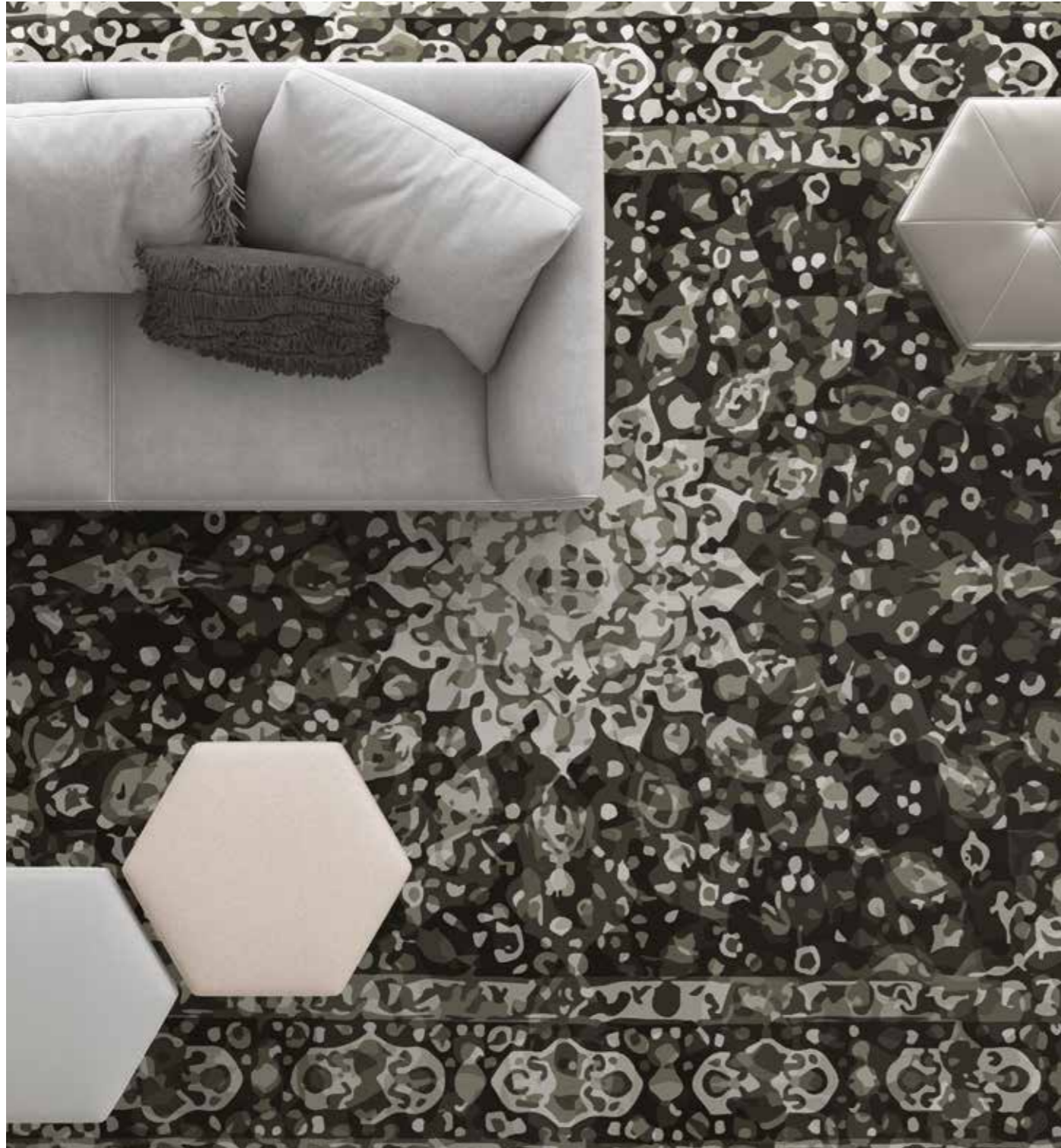
COLLECTION

DOMESTIC NATURE

DN3.01

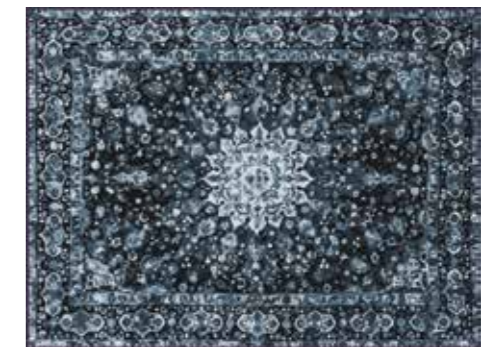
DOMESTIC NATURE

○ AVAILABLE AS BROADLOOM



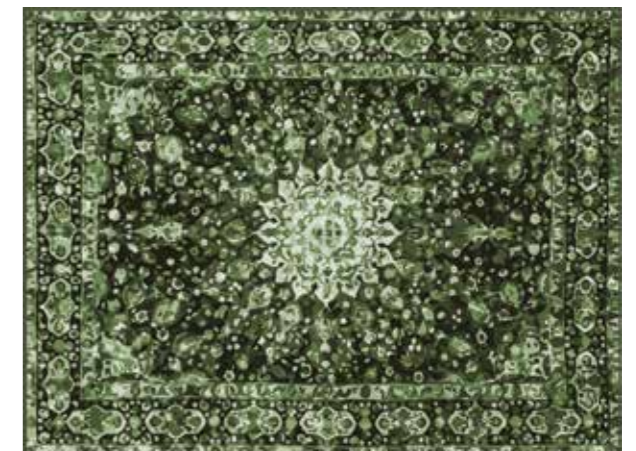
350 ϕ | 300x200 | 400x300 cm

DN3.01.1



350 ϕ | 300x200 | 400x300 cm

DN3.01.2



350 ϕ | 300x200 | 400x300 cm

DN3.01.3

technical
specifications.

BROADLOOM PA SAXONY 2800

Identification	Standard	Product Data
Manufacturing process	DIN ISO 2424	Tufting 1/10"
Frontside structure	DIN ISO 2424	Cut pile / Saxony
Color	DIN ISO 2424	Chromojet Print
Pile material		100% Polyamid PA
Primary backing	DIN ISO 2424	PP Woven
Secondary backing	DIN ISO 2424	Felt backing
Pile weight	DIN ISO 2424	Approx. 1050 g/m ²
Total weight	ISO 8543	Approx. 2800 g/m ²
Pile height	ISO 1766	Approx. 5.5 mm
Total thickness	ISO 1765	Approx. 10,00 mm
Number of knots	ISO 1763	Approx. 213.300 /m ²
Width	DIN 3018	Approx. 400 cm
Wear classification	EN 1307:2004	33 heavy contract
Comfort rating	EN 1307:2004	LC 4
Surface resistance	ISO 10965	Approx. Ω
Vertical resistance	ISO 10965	Approx. Ω
Sound absorption coefficient	ISO 11654:1997-07	Hz 125 250 500 1000 2000 4000 α _p 0,02 0,06 0,10 0,22 0,39 0,44 α _w 0,20Hz
Impact sound insulation	EN ISO 10140:2010	Approx. 33dB
Antistatic behavior	ISO 6356:2012	< 2 kV
Thermal resistance	ISO 8302:1991	Approx: 0.11K*m/ W _w
Fire rating	DIN EN 13501-1	B _{fl} - s1
Color fastness to light	ISO 105-B02:2000	5-6
Color fastness to water	DIN EN ISO 105 E01:2013	5
Rubbing fastness dry/wet	DIN EN ISO 105 X12:2002	5

PA SAXONY 2900

Identification	Standard	Product Data
Manufacturing process	DIN ISO 2424	Tufting 1/10"
Frontside structure	DIN ISO 2424	Cut pile / Saxony
Color	DIN ISO 2424	Chromojet Print
Pile material		100% Polyamid PA
Primary backing	DIN ISO 2424	PP Woven
Secondary backing	DIN ISO 2424	Felt backing
Pile weight	DIN ISO 2424	Approx. 1245 g/m ²
Total weight	ISO 8543	Approx. 2900 g/m ²
Pile height	ISO 1766	Approx. 6 mm
Total thickness	ISO 1765	Approx. 10,50 mm
Number of knots	ISO 1763	Approx. 237.000 /m ²
Width	DIN 3018	Approx. 400 cm
Wear classification	EN 1307:2004	33 heavy contract
Comfort rating	EN 1307:2004	LC 4
Surface resistance	ISO 10965	Approx. Ω
Vertical resistance	ISO 10965	Approx. Ω
Sound absorption coefficient	ISO 11654:1997-07	Hz 125 250 500 1000 2000 4000 α _p 0,01 0,05 0,11 0,28 0,37 0,48 α _w 0,30Hz
Impact sound insulation	EN ISO 10140:2010	Approx. 35dB
Antistatic behavior	ISO 6356:2012	< 2 kV
Thermal resistance	ISO 8302:1991	Approx: 0.13K*m/ W _w
Fire rating	DIN EN 13501-1	B _{fl} - s1
Color fastness to light	ISO 105-B02:2000	5-6
Color fastness to water	DIN EN ISO 105 E01:2013	5
Rubbing fastness dry/wet	DIN EN ISO 105 X12:2002	5



PA SAXONY 3230

Identification	Standard	Product Data
Manufacturing process	DIN ISO 2424	Tufting 1/10"
Frontside structure	DIN ISO 2424	Cut pile / Saxony
Color	DIN ISO 2424	Chromojet Print
Pile material		100% Polyamid PA 6.6
Primary backing	DIN ISO 2424	PP Woven
Secondary backing	DIN ISO 2424	Felt backing 500 g/m ²
Pile weight	DIN ISO 2424	+/- 1600 g/m ²
Total weight	ISO 8543	+/- 3230 g/m ²
Pile height	ISO 1766	+/- 10 mm
Total thickness	ISO 1765	+/- 12.5 mm
Number of knots	ISO 1763	+/- 1193000 /m ²
Width	DIN 3018	+/- 400 cm
Wear classification	EN 1307:2004	32 heavy contract
Comfort rating	EN 1307:2004	LC 5
Fire rating	DIN EN 13501-1	C _{fl} -s1
Remarks	Only suitable for rugs	



These details are approximate. Complete specification details and associated certificates together with tolerances applying to the above can be provided upon request. We reserve the right to alter specifications without notice. Due to method of manufacture, perfect pattern and/ or colour matching cannot be guaranteed. In cut pile carpet, shading/ pile reversal might occur without affecting overall quality and suitability. Shading/ pile reversal will not be considered as a manufacturing fault and will not affect durability of the carpet.