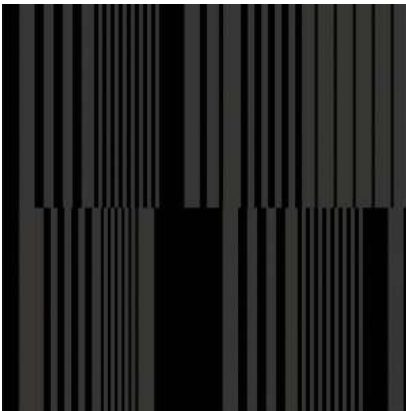




Pattern



Installation



CO2.01

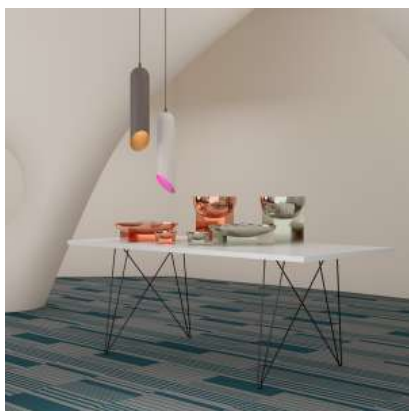
Type of manufacture:	Woven
Pile material:	100% PET Anvire FR®
Structure:	Loop pile
Dye method:	Print
Classification for use:	33 Commercial - heavy
Flammability:	Bfl - s1
Secondary backing:	TEXtiles®
Dimensions:	50 x 50cm
Total Thickness:	Ca. 4,90 mm
Total mass:	Approx. 3.700 g/m ²
Number of tufts:	Ca. 156.000 / m ²
Impact sound reduction:	20 dB(A)
Sound absorption:	?Lw ca. 20d B



Pattern



Installation

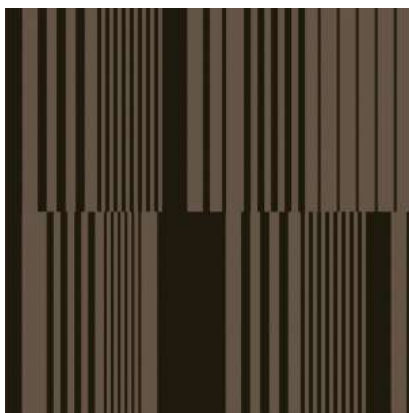


CO2.02

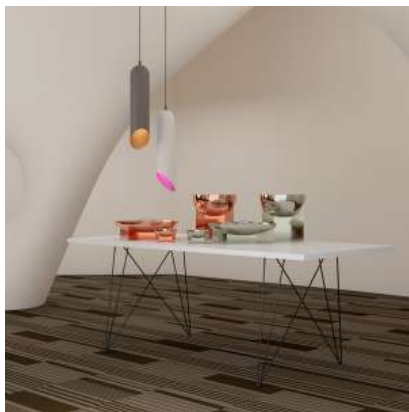
Type of manufacture:	Woven
Pile material:	100% PET Anvire FR®
Structure:	Loop pile
Dye method:	Print
Classification for use:	33 Commercial - heavy
Flammability:	Bfl - s1
Secondary backing:	TEXtiles®
Dimensions:	50 x 50cm
Total Thickness:	Ca. 4,90 mm
Total mass:	Approx. 3.700 g/m ²
Number of tufts:	Ca. 156.000 / m ²
Impact sound reduction:	20 dB(A)
Sound absorption:	?Lw ca. 20d B



Pattern



Installation



CO2.03

Type of manufacture:	Woven
Pile material:	100% PET Anvire FR®
Structure:	Loop pile
Dye method:	Print
Classification for use:	33 Commercial - heavy
Flammability:	Bfl - s1
Secondary backing:	TEXtiles®
Dimensions:	50 x 50cm
Total Thickness:	Ca. 4,90 mm
Total mass:	Approx. 3.700 g/m ²
Number of tufts:	Ca. 156.000 / m ²
Impact sound reduction:	20 dB(A)
Sound absorption:	?Lw ca. 20d B