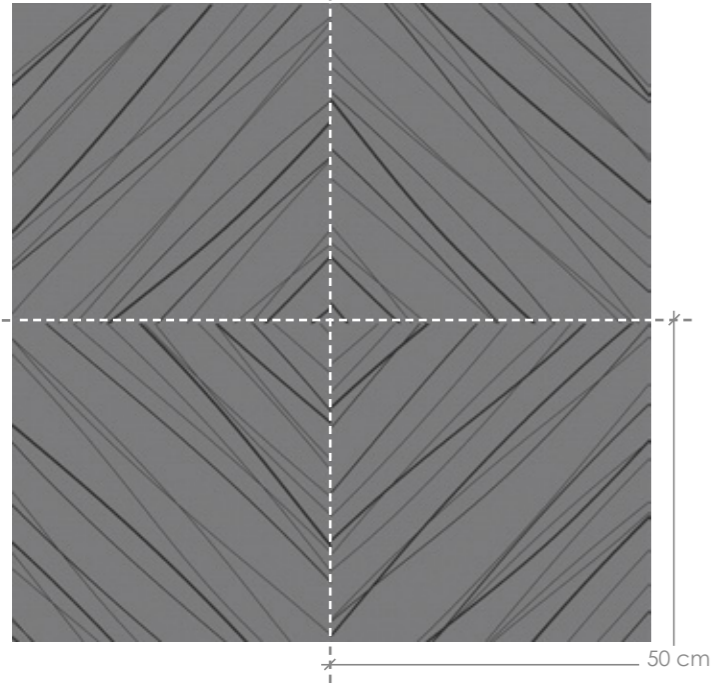


CARPET TILES CARPET TILES CARPET TILES CARPET TILES CARPET TILES
CARPET TILES CARPET TILES CARPET TILES CARPET TILES CARPET TILES
TILES CARPET TILES CARPET TILES
CARPET TILES CARPET TILES CARPET TILES CARPET TILES CARPET TILES CA

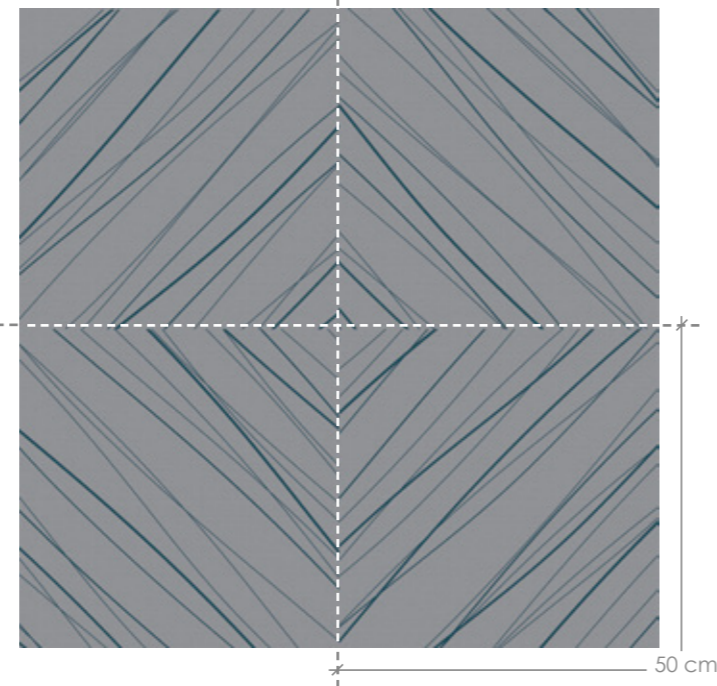
yoyo-designs.com



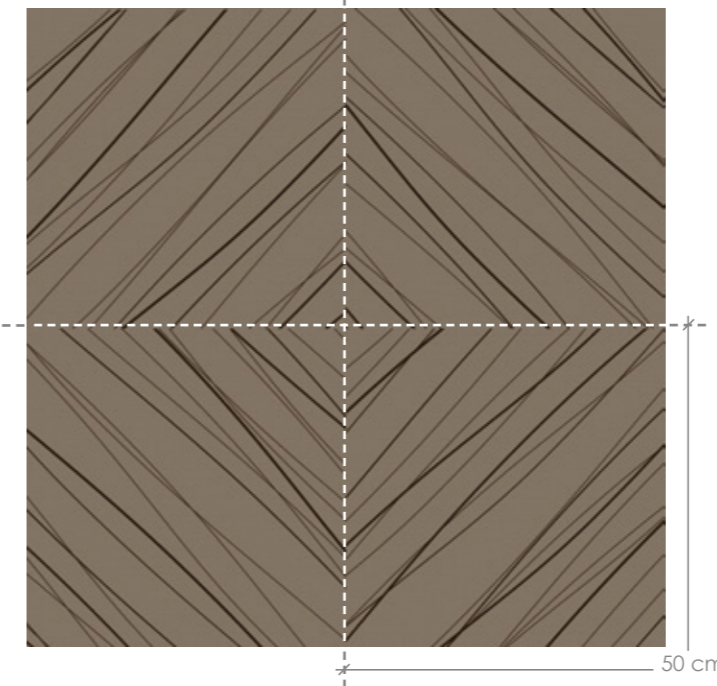
OR2.01



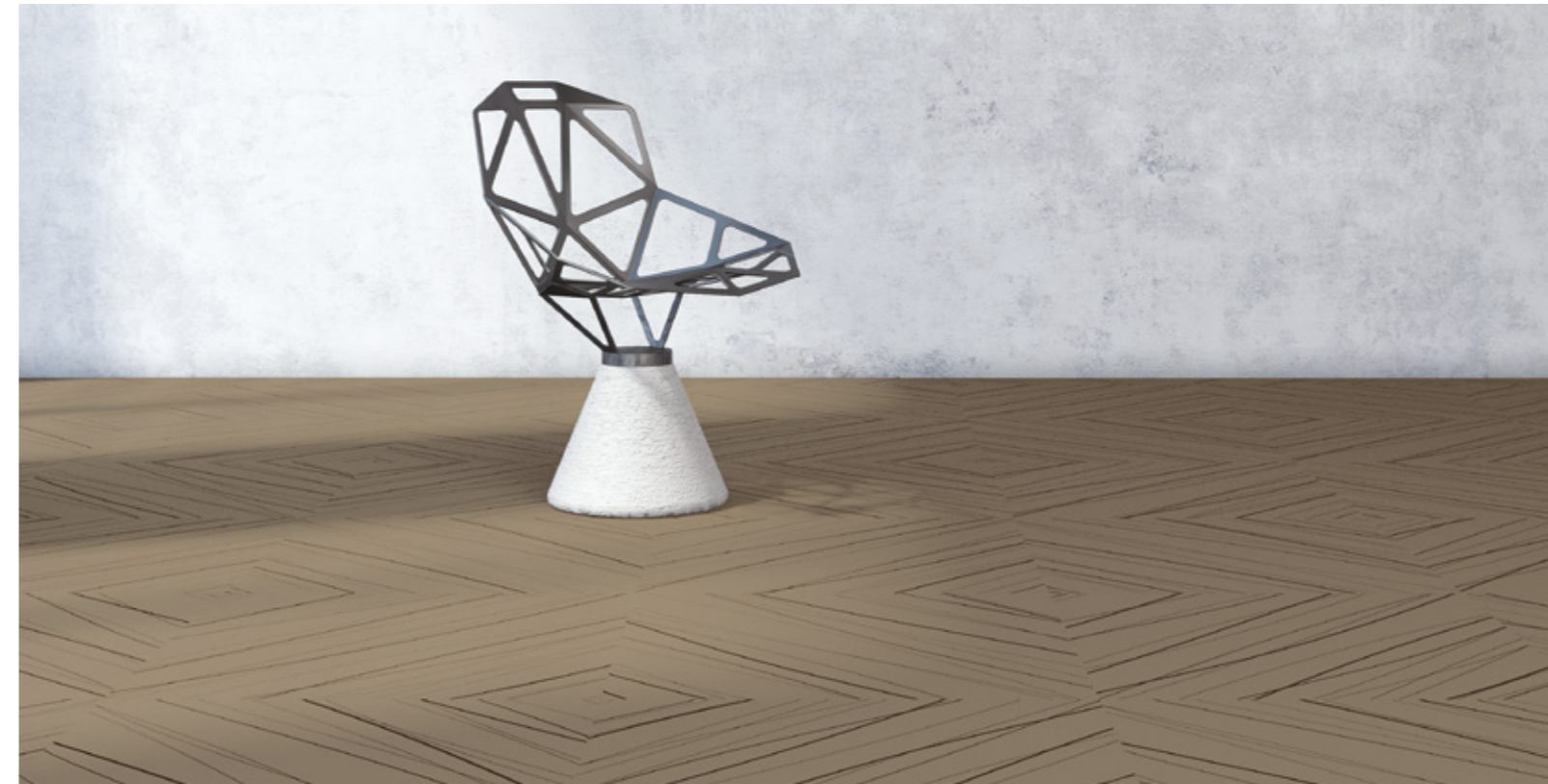
OR2.02



OR2.03



ORTHOGONAL

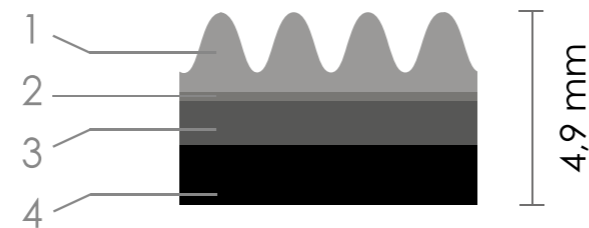


CARPET TILES

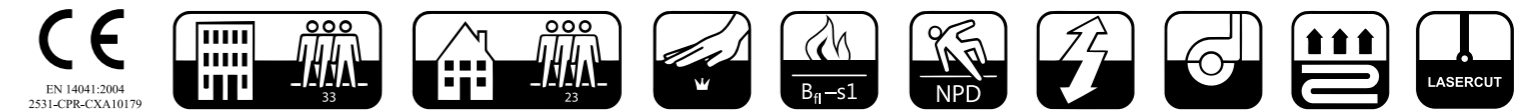
TECHNICAL SPECIFICATIONS

Composition

1. High quality brand name Pet Anvire FR®
2. Latex precoat
3. Eva heavy-duty polyolefin layer
4. Highly compacted, dimensionally stable PET fleece fabric



Identification	Standard	Product Data
Type of manufacture	ISO 2424	Woven
Structure	ISO 2424	Loop pile
Pile material	ISO 2424	100% PET Anvire FR
Dye method		Print
Treatment		-
Primary backing	ISO 2424	PET
Secondary backing	ISO 2424	TEXTiles
Dimensions	ISO 3018	By order
Pattern report		
Effective pile thickness	ISO 1766	Ca. 2,20 mm
Total thickness	ISO 1765	Ca. 4,90 mm
Total pile mass	ISO 2424	Ca. 655 g/m ²
Total mass	ISO 8543	Ca. 2.300 g/m ²
Number of tufts	ISO 1763	Ca. 156.000 /m ²
Stroll test	ISO 6356	< 2 KV
Vertical resistance	ISO 10965	-
Horizontal resistance	ISO 10965	-
Classification	ISO 1307	33 Commercial - heavy
Luxury rating class	EN 1307	LC1
Dimensional stability	EN 986	< 0,2 %
Impact sound reduction	ISO 10140	ΔL_w ca. 20dB
Sound absorption	EN ISO 354	Ca. 0,20 a_w
Noise reduction	EN ISO 354	-
Thermal Conductivity	ISO 8302	Ca. 0,10 m ² K/W
Flammability	EN 13501-1	B _{fl} - s1
ABZ - Nr.		Z-156.601-1498
IACG - Nr.		IACG-37-13-05



The details given above may be subject to change for the benefit of further improvements.
The displayed floor designs might be slightly different to the original.