

Yo<sup>2</sup>

PARCOM

TECHNICAL SPECIFICATIONS



| Identification           | Standard        | Product Data                 |
|--------------------------|-----------------|------------------------------|
| Dimensions & Thickness   | EN 427 & EN 428 | 1235 x 200 x 9,6 mm          |
| Classification           | EN 16511        | Domestic 23 / Commercial 33  |
| Total weight             | EN 430          | ca. 7600 g/m <sup>2</sup>    |
| Impact sound reduction   | EN 140          | 15 dB                        |
| Effect of castor chair   | EN 425          | Suitable                     |
| Reaction of fire         | DIN 4102        | C <sub>fl</sub> -s1          |
| Dimensional stability    | EN 434          | < 0.05%                      |
| Thermal resistance       | EN 12667        | ca. 0,102 m <sup>2</sup> K/W |
| Residual indentation     | EN 433          | max. 0.05 mm / Class 33      |
| Resistance to chemicals  | EN 423          | Very good resistance         |
| Emissions value          |                 | in conformity with U-sign    |
| Locking strenght         | ISO 24334       | HDF > 450 Kg/lfm - kg/m      |
| Abrasion resistance      | EN 14354        | > 8000 Turns / WR4           |
|                          | EN 13329        | AC5                          |
| Micro scratch resistance | EN 16094        | MSR-A1 / MSR-B1 / Class 33   |
| Stain resistance         | EN 438-2        | Grade 5/5                    |
| Slip resistance          | EN 13893        | Class DS / R10               |

Z-156.613-746

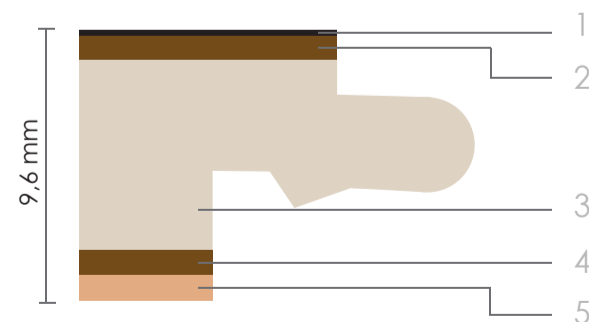


EU Patent 0843763 B1 - U.S. Patent nr. 6.006.486

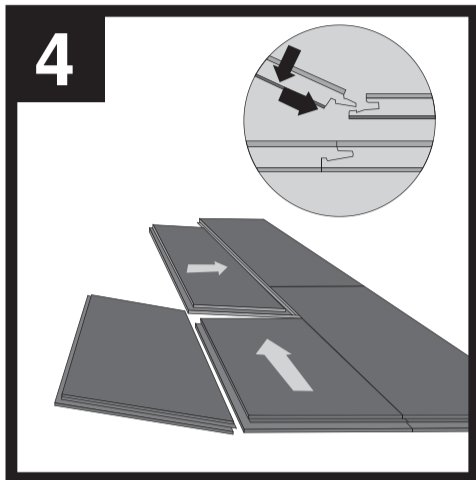
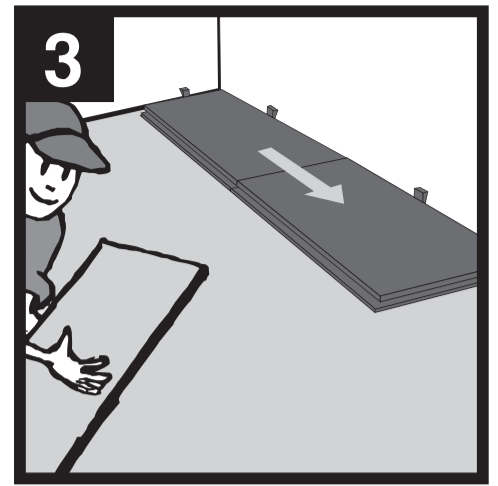
Leimfreies Klick-System  
Glueless click-system

## Composition

1. Hot Coating protection
2. 0,8 mm Oak Wood
3. 6,8 mm High density, moisture retardant fibre-board
4. 0,8 mm Wood backing
5. 1,2 mm Cork underlay



The details given above may be subject to change for the benefit of further improvements. The displayed floor designs might be slightly different to the original.



## Installation and cleaning

### Preparation of the subfloor

The subfloor must be clean, dry, level, have tensile strength and be compression-proof. Use a filler to level out any irregularities of more than +/- 2 mm over a length of 1.5 m. When dealing with rooms without cellars or for all mineral bases, install a 0.2 mm thick pe foil first as insulation against humidity.

### Pre-installation

Wood klick must be kept at a room temperature of 20-22° celsius and a relative humidity of about 50-60% for 24 hours for acclimatization purposes prior to installation while the package is still closed. The condition of the individual panels should be examined in the daylight to ensure they are perfect; complaints on any flaws should be made prior to installation.

### Installation instructions

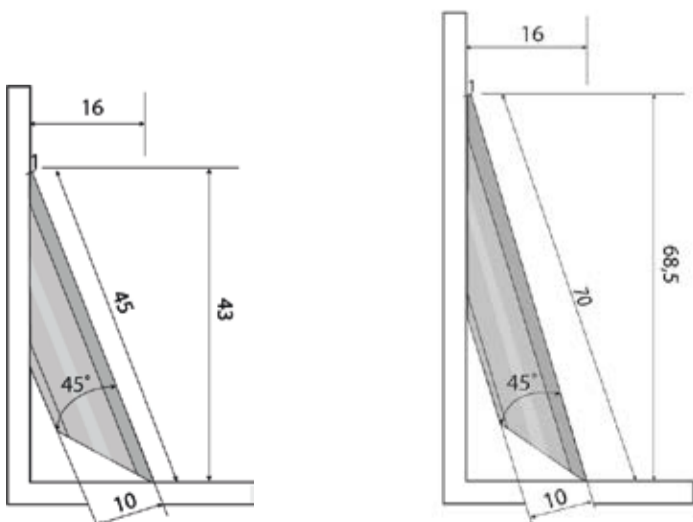
Take a panel and install it leaving a 1 cm space from the wall. Use wedges to maintain the correct distance from the wall. Then install the next panels as a direct extension of the first ones.

The leftover piece from the first strip is used as the first panel of the second strip. It should be at least 30 cm in length. Hold this panel at a slight angle of about 20 and then click it in place by pressing against it and rocking it slightly. The panels are clicked in place by tapping against them lightly with a hammer using a wooden block along the face side. For pipe connections, drill holes that have a diameter that is about 20 mm larger than the pipe. The capping is done afterwards using rosettes. Shorten door frames appropriately so that the elements can be float mounted. Baseboards and crossover rails are used as the edges.

### Cleaning and care

The ideal room temperature is about 20-22° celsius and relative humidity of about 50-60%. The floor must be clean with a damp mop. After the first cleaning of the freshly installed floor, the surface is maintained by wiping it clean. Variances in color and structure are material / nature related. Color alterations can result, as is the case with any natural product.

## Conical skirtings



For further product and installation information, please visit: [www.yoyo-designs.com](http://www.yoyo-designs.com)