

Yo<sup>2</sup>

PARCOM

TECHNICAL SPECIFICATIONS



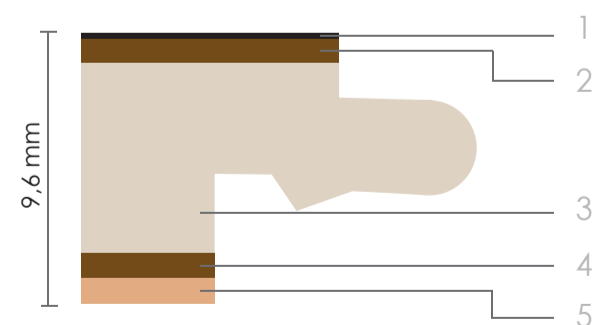
Identification	Standard	Product Data
Dimensions & Thickness	EN 427 & EN 428	1235 x 200 x 9,6 mm
Classification	EN 16511	Domestic 23 / Commercial 33
Total weight	EN 430	ca. 7600 g/m <sup>2</sup>
Impact sound reduction	EN 140	15 dB
Effect of castor chair	EN 425	Suitable
Reaction of fire	DIN 4102	C <sub>fl</sub> -s1
Dimensional stability	EN 434	< 0.05%
Thermal resistance	EN 12667	ca. 0,102 m <sup>2</sup> K/W
Residual indentation	EN 433	max. 0.05 mm / Class 33
Resistance to chemicals	EN 423	Very good resistance
Emissions value		in conformity with U-sign
Locking strenght	ISO 24334	HDF > 450 Kg/lfm - kg/m
Abrasion resistance	EN 14354	> 8000 Turns / WR4
	EN 13329	AC5
Micro scratch resistance	EN 16094	MSR-A1 / MSR-B1 / Class 33
Stain resistance	EN 438-2	Grade 5/5
Slip resistance	EN 13893	Class DS / R10

Z-156.613-746

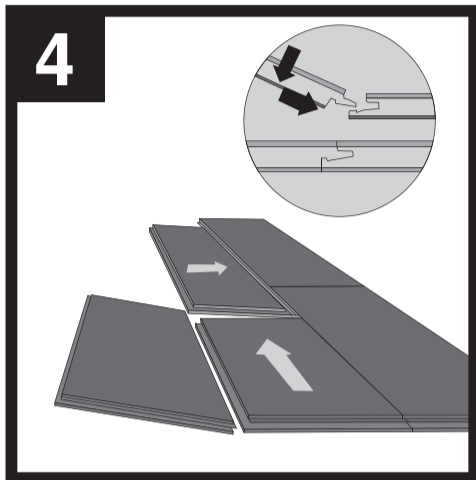
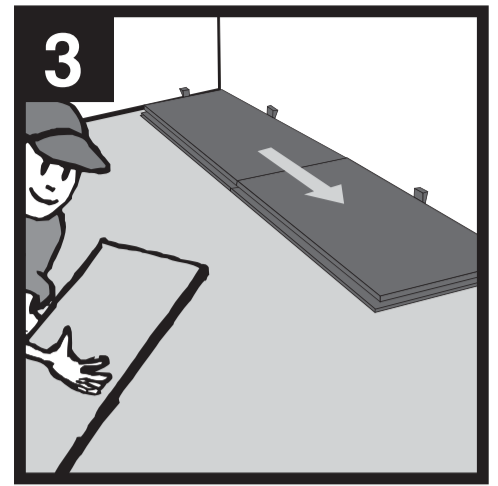


## Composition

1. Hot Coating protection
2. 0,8 mm Oak Wood
3. 6,8 mm High density, moisture retardant fibre-board
4. 0,8 mm Real wood backing
5. 1,2 mm Cork underlay



The details given above may be subject to change for the benefit of further improvements. The displayed floor designs might be slightly different to the original.



## Installation and cleaning

### Preparation of the subfloor

The subfloor must be clean, dry, level, have tensile strength and be compression-proof.

Use a filler to level out any irregularities of more than +/- 2 mm over a length of 1.5 m.

When dealing with rooms without cellars or for all mineral bases, install a 0.2 mm thick pe foil first as insulation against humidity.

### Pre-installation

Wood click must be kept at a room temperature of 20-22 and a relative humidity of about 50-60% for 24 hours for acclimatization purposes prior to installation while the package is still closed. The condition of the individual panels should be examined in the daylight to ensure they are perfect; complaints on any flaws should be made prior to installation.

### Installation instructions

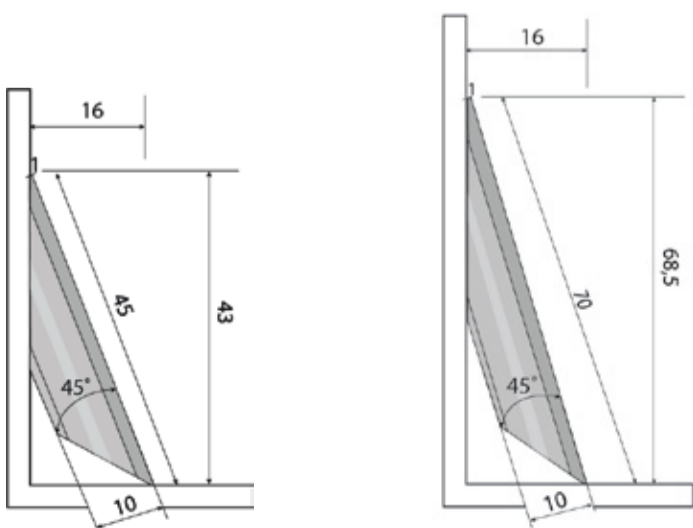
Take a panel and install it leaving a 1 cm space from the wall. Use wedges to maintain the correct distance from the wall. Then install the next panels as a direct extension of the first ones.

The leftover piece from the first strip is used as the first panel of the second strip. It should be at least 30 cm in length. Hold this panel at a slight angle of about 20 and then click it in place by pressing against it and rocking it slightly. The panels are clicked in place by tapping against them lightly with a hammer using a wooden block along the face side. For pipe connections, drill holes that have a diameter that is about 20 mm larger than the pipe. The capping is done afterwards using rosettes. Shorten door frames appropriately so that the elements can be float mounted. Baseboards and crossover rails are used as the edges.

### Cleaning and care

The ideal room temperature is about 20-22°celsius and relative humidity of about 50-60%. The floor must be clean with a damp mop. After the first cleaning of the freshly installed floor, the surface is maintained by wiping it clean. Variances in color and structure are material / nature related. Color alterations can result, as is the case with any natural product.

### Conical skirtings



For further product and installation information, please visit: [www.yoyo-designs.com](http://www.yoyo-designs.com)